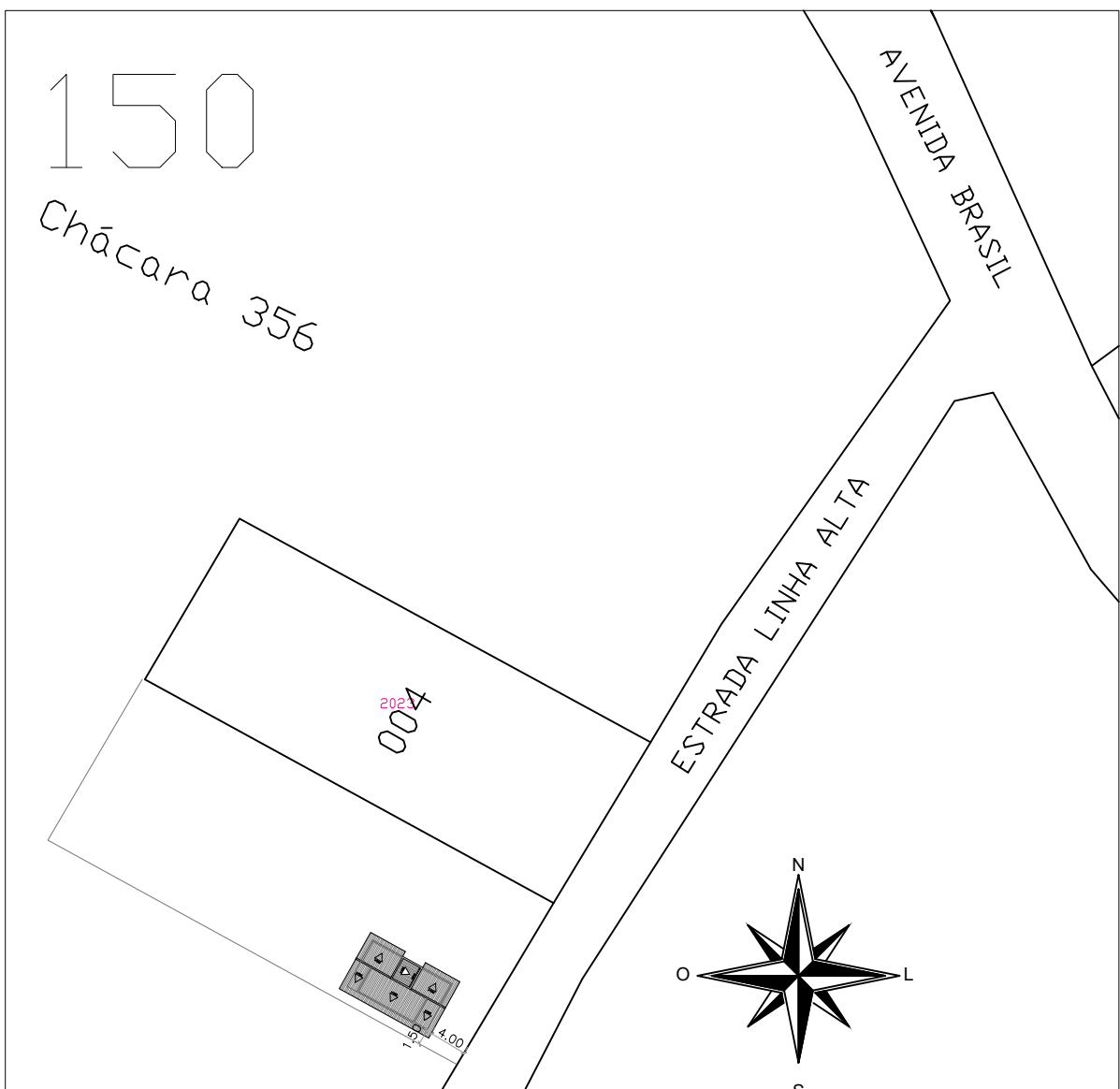
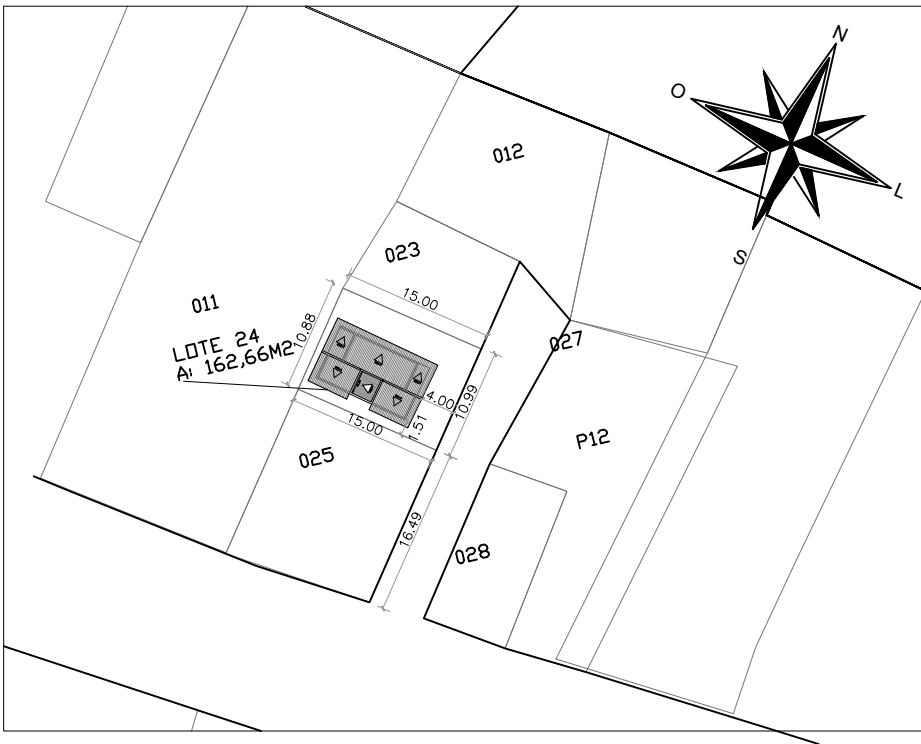


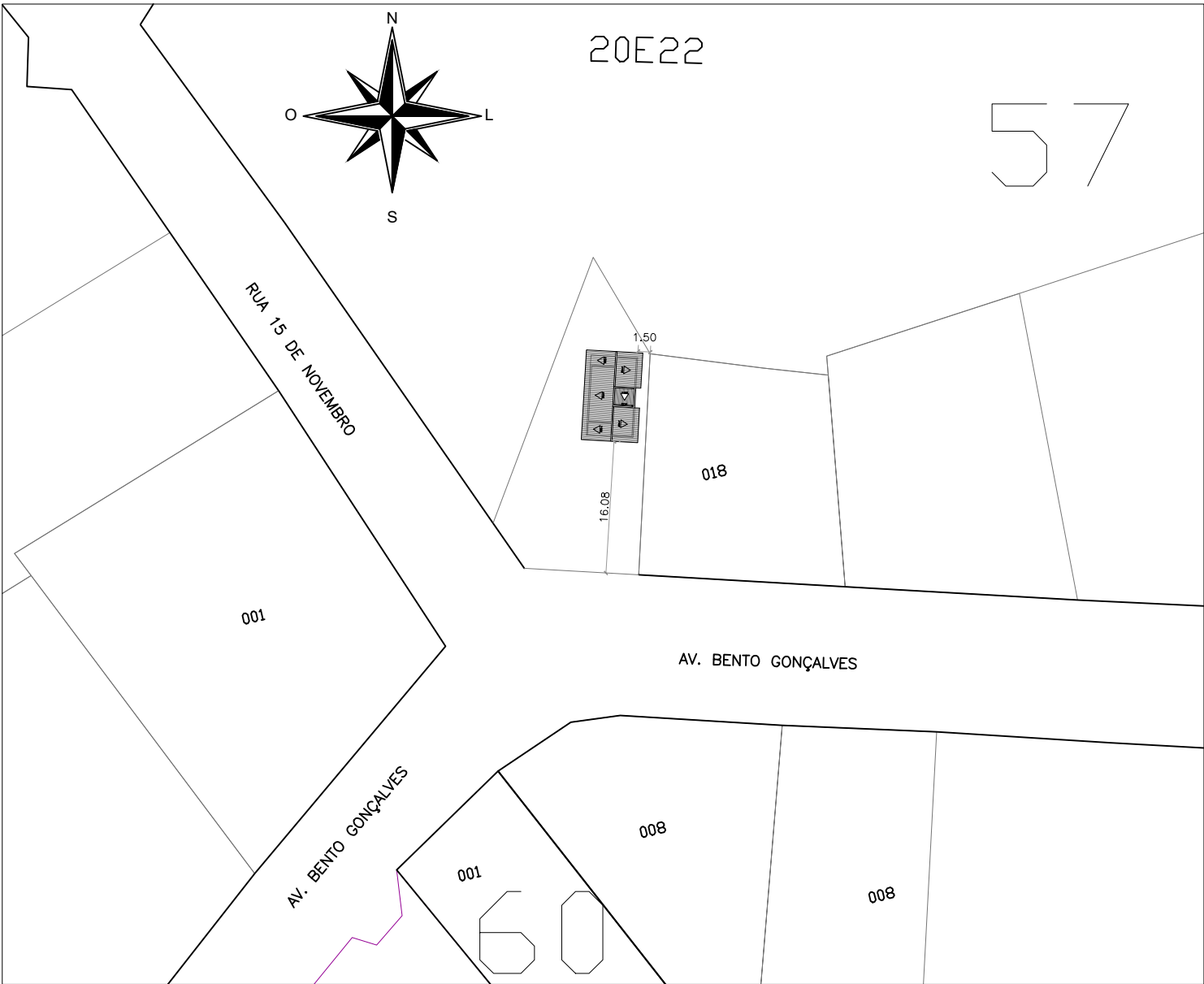
25 - Contrato Silvana Silverio



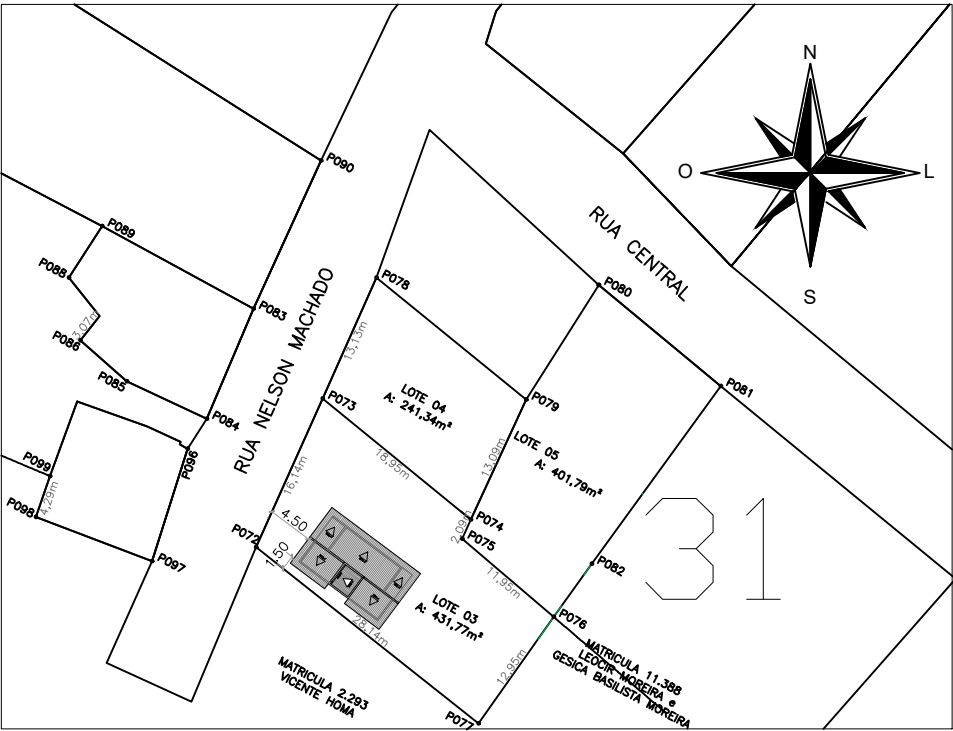
07 - MATRICULA 15.813



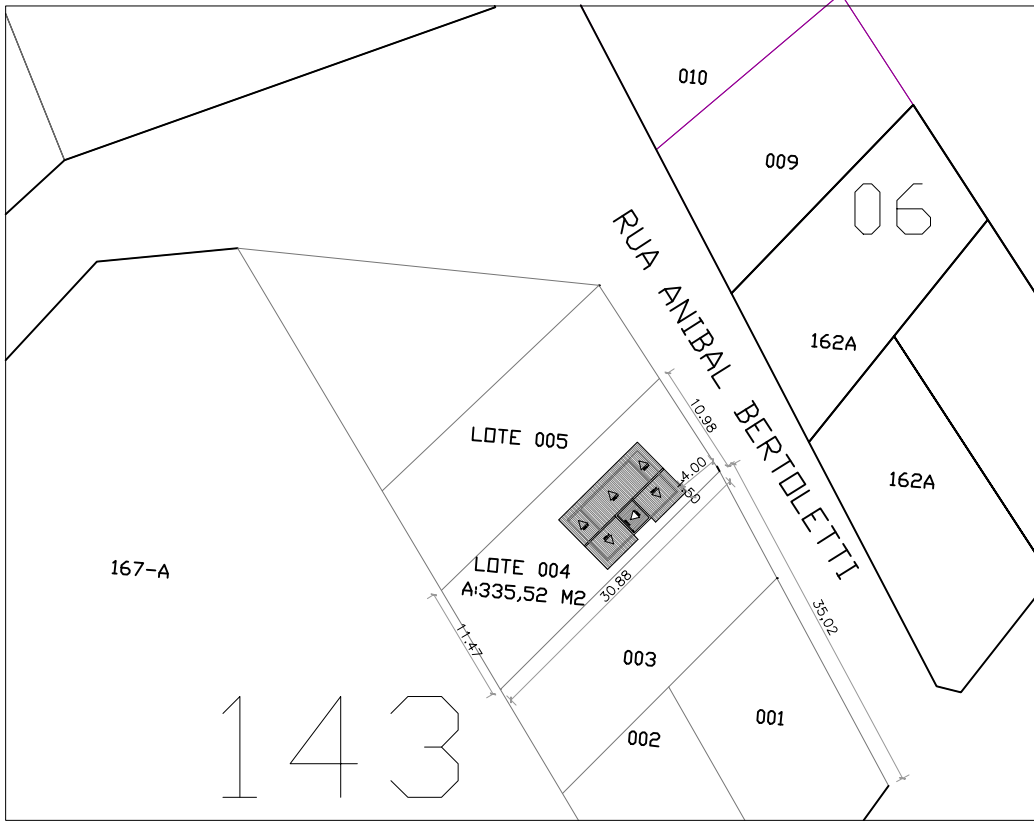
20 - MATRICULA 5.242



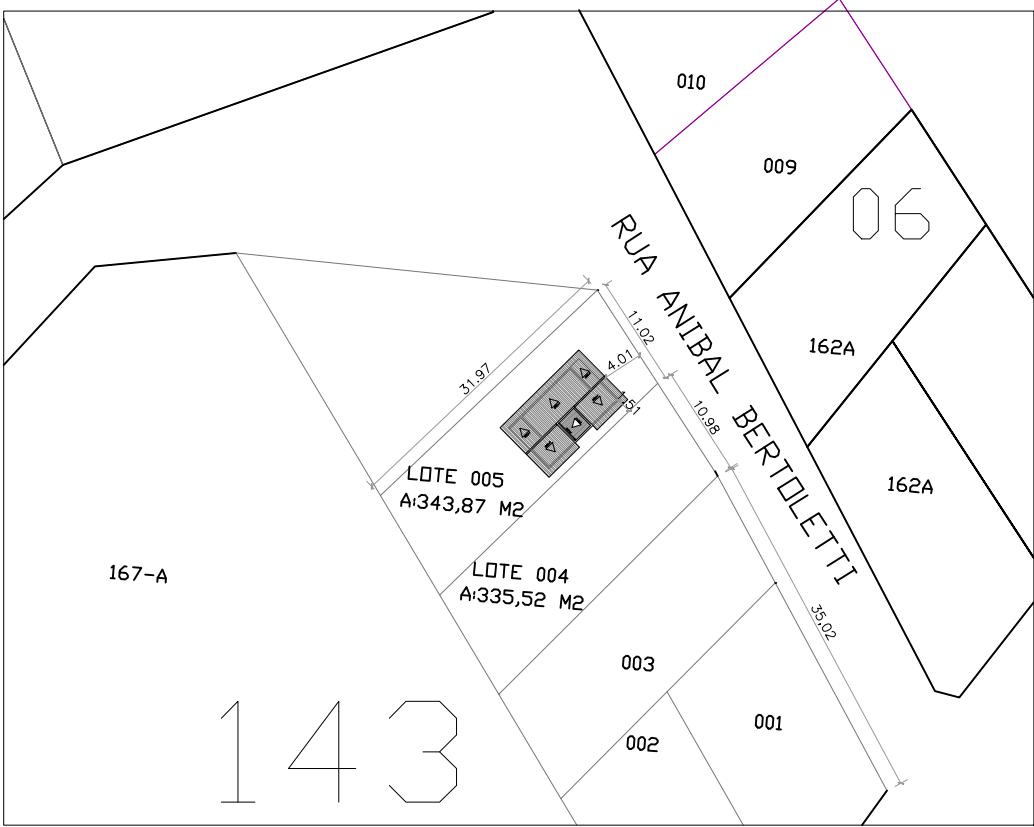
16 - ESC. P. PRISCILA DA SILVA



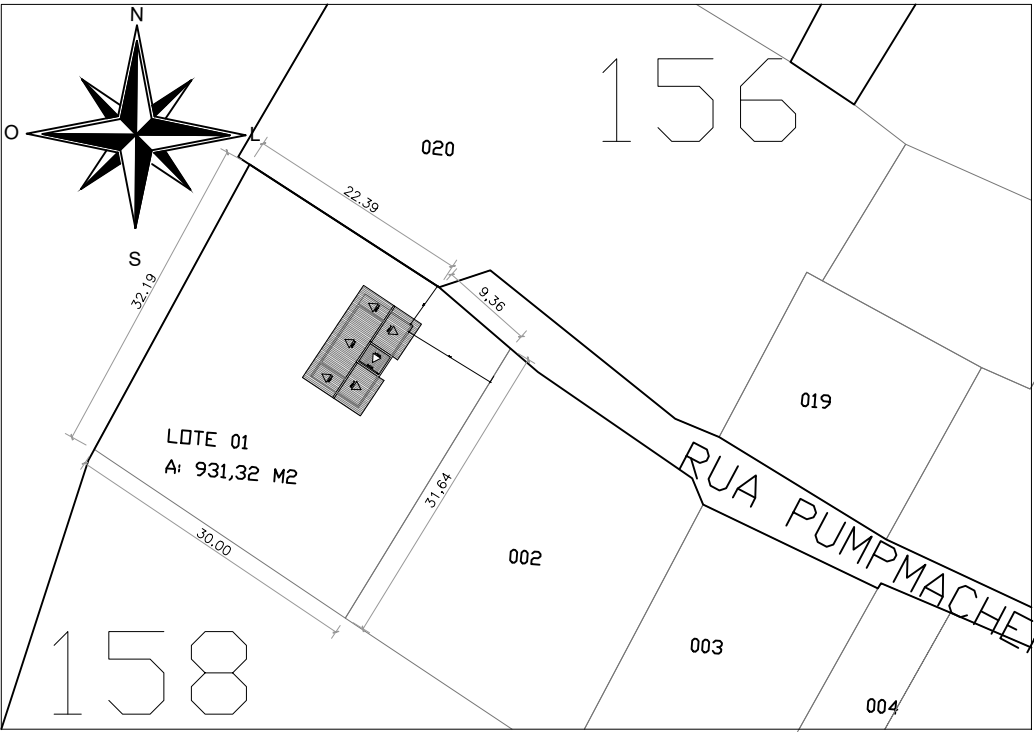
23 - JOAO PEDRO BASSI 15.324



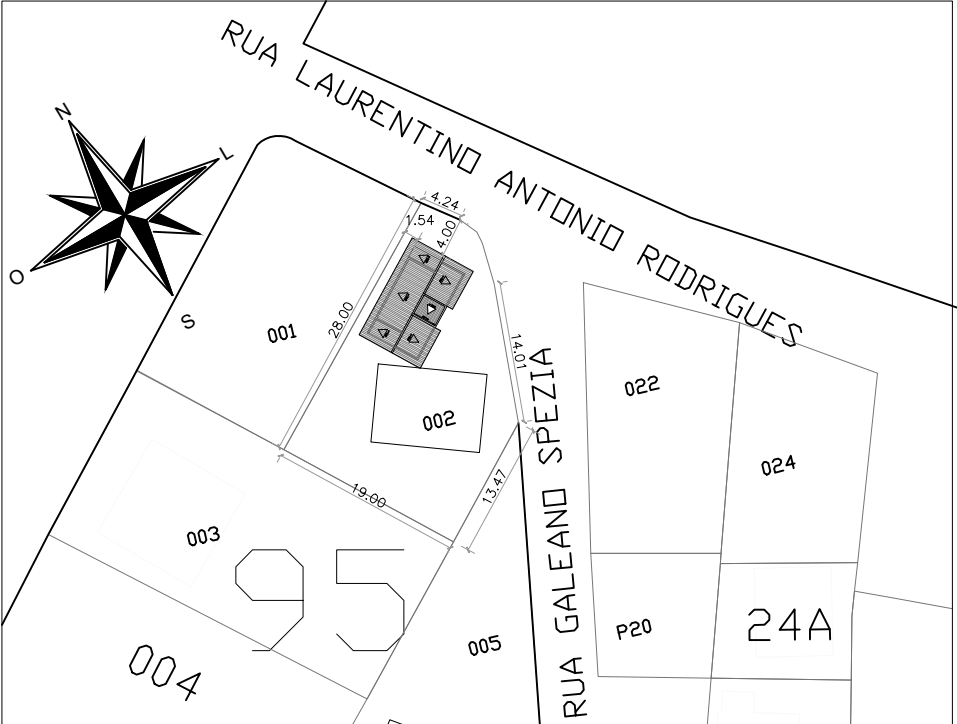
- Contrato ITANEI BOLSON 15.32.



15 - MATRICULA 18.022




13 - MATRICULA 8.951



LOCALIZAÇÃO/SITUAÇÃO

Escala: 1:750

 MUNICÍPIO DE AMETISTA DO SUL		CONSTRUÇÃO DE 25 UNIDADES HABITACIONAIS MCMV - FNHIS	
Rua Guaporé, nº 1433, centro Ametista Do Sul - RS Fone: CEP: 98465-000		PROJETO ARQUITETÔNICO: LOCALIZAÇÃO	
PROPRIETÁRIO		RESP. TÉCNICO	
Município de Ametista Do Sul CNPJ: 92.411.156/0001-83		Henrique T. Cremonini Eng. Civil CREA-RS 245874	
CIDADE		MATERIA TERRENO:	
Ametista Do Sul/RS		ÁREA:	
ESCALA:		55,66m²	
DATA:		DESENHO:	
Julho/2025		Henrique T. Cremonini	